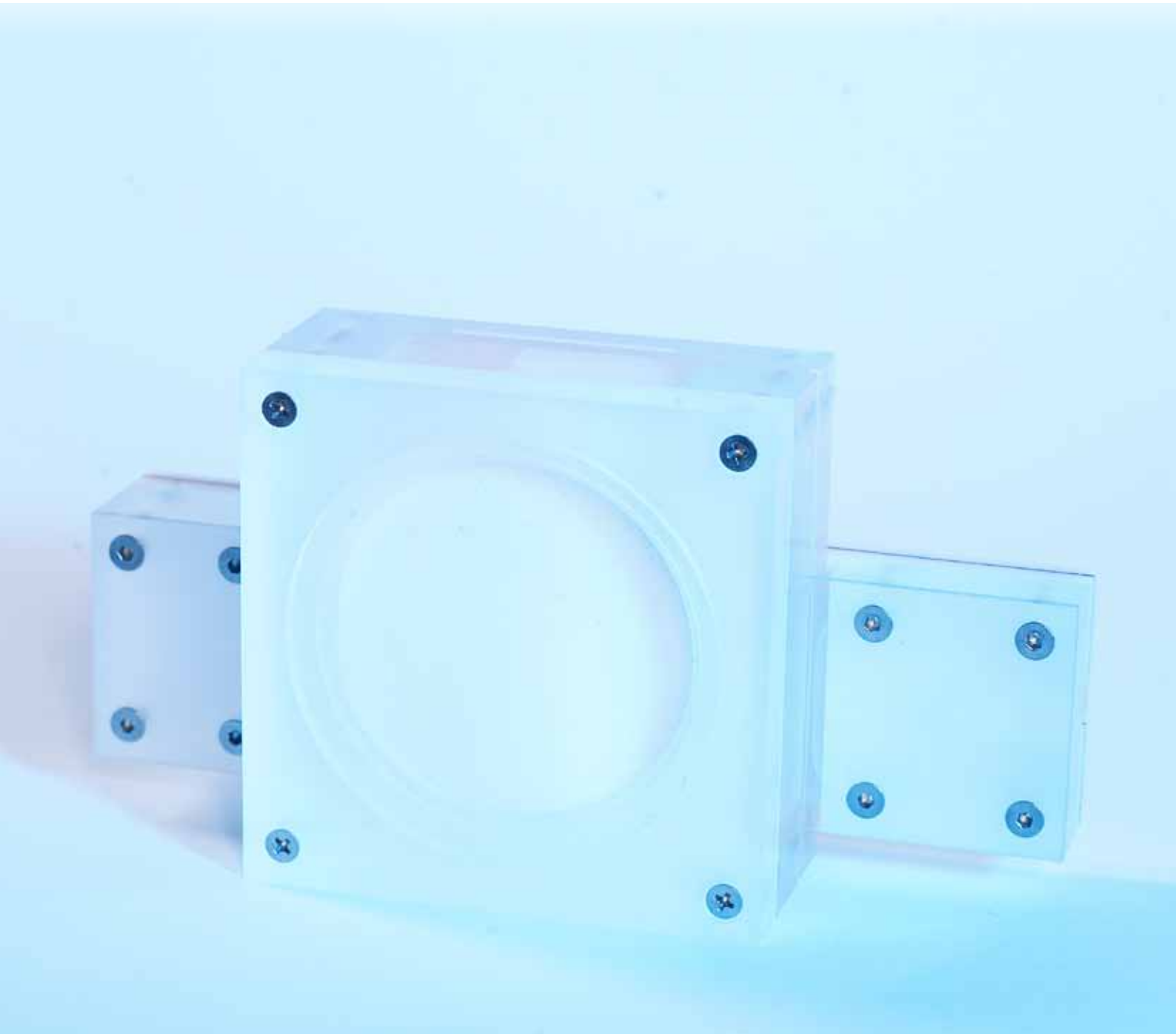


QUART dentII & QUART dentII mpc

Conventional Dental Test Phantom



QUART dentII + mpc

Phantom & Holder for Universal Conventional Dental QA/QC



The *QUART dentII* test phantom is designed to be used for QA/QC routine testing in conventional Dental X-Ray applications ranging from intra-oral to panoramic and cephalometric equipment. It was developed to fully test equipment featuring film-screen technology.

Only one exposure is required to collect all necessary parameters to determine the imaging quality of the x-ray equipment. After the exposure, the test image is evaluated visually.

The *QUART dentII* line of phantoms fully comply with IEC 61223-3-4 and IEC 61223-2-7, DIN 6868-151 and DIN 6868-5 as well as IPEM, ÖNORM, PN-EN standards and AFSSAPS regulations.

Phantom and Test Procedure

QC tests are carried out at initial equipment installation to establish a visual reference. On a regular routine basis, they are meant to ensure the constancy of the system's imaging capabilities. Any deterioration in imaging performance would be revealed by the visual evaluation of the test images. A single image of the QA/QC phantom contains a lot of crucial information for that purpose.

The *dentII* test phantom is provided with the associated *mpc* holder for panoramic and cephalometric modalities. It ensures a proper positioning and excellent support. It also incorporates the required filtration for OPG and CEPH.

Test Parameters

- _ Optical Density
- _ Homogeneity
- _ Radiation Field Alignment
- _ Artefacts, Image Flaws

Phantom Description

- _ Size: 8x8x3.2 cm (LxWxH)
- _ 3 Centering Rings with different diameters
- _ Slots for film-screen & dosimeter detector
- _ Fully integrated Grey Step Test (0.3 mm Cu / 0.3 mm Cu + 8 mm PTFE / 0.3 mm Cu + 16 mm PTFE) according anatomical attenuation properties
- _ Holder for Positioning - integrated 0.5 mm Cu added filtration for OPG & Ceph

Delivery includes

- ✓ *QUART dentII* Test Phantom
- ✓ *QUART dentII mpc* Universal Phantom Holder
- ✓ Manuals
- ✓ Transport Case with Foam Insert

Also available

QUART dent/digitest

QUART dent/digitest M2

QUART dido/time R

Digital Dental Test Phantom

Phantom for Critical Manufacturer QA/QC

Constancy Test Dosimeter

